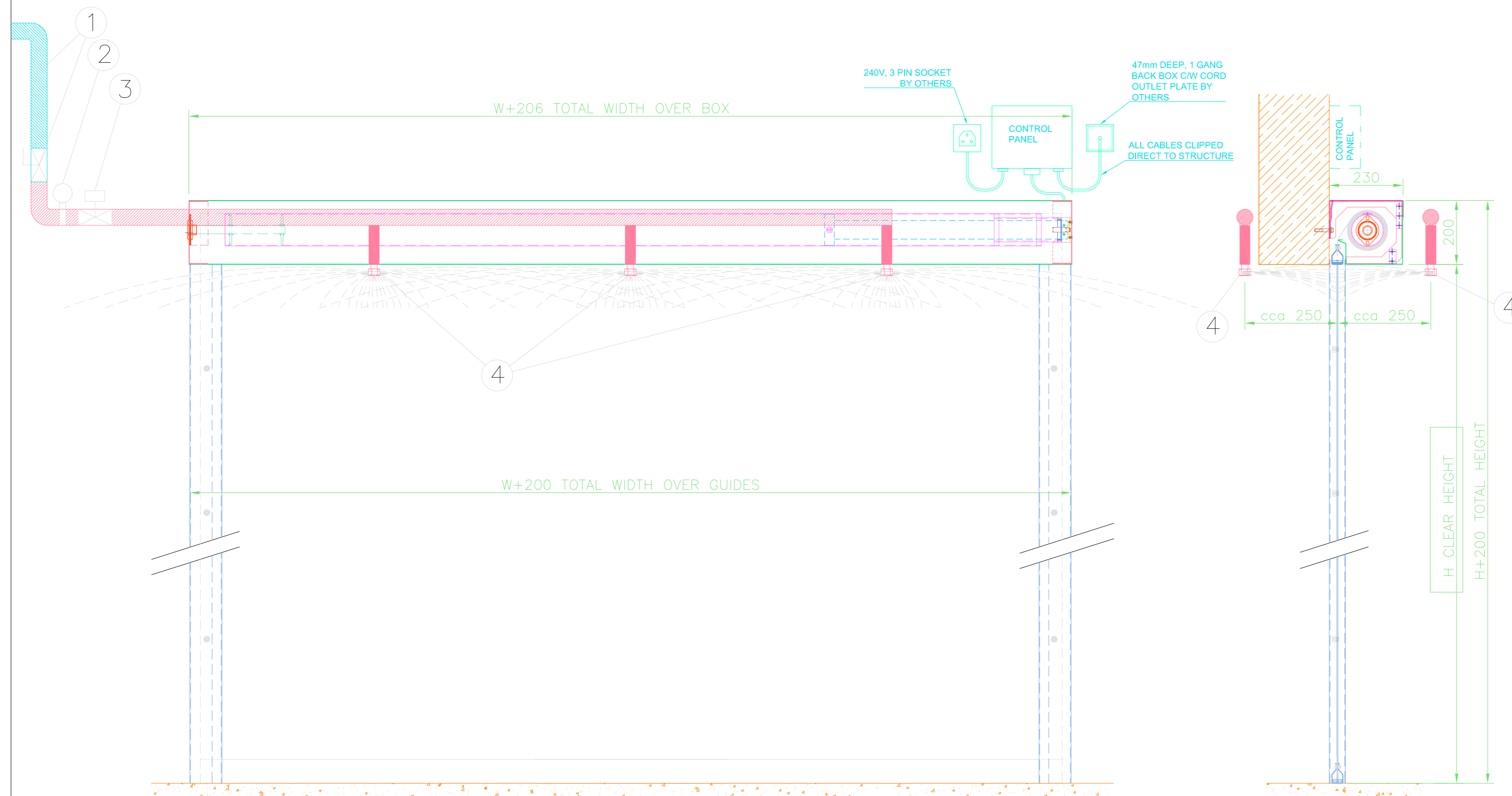


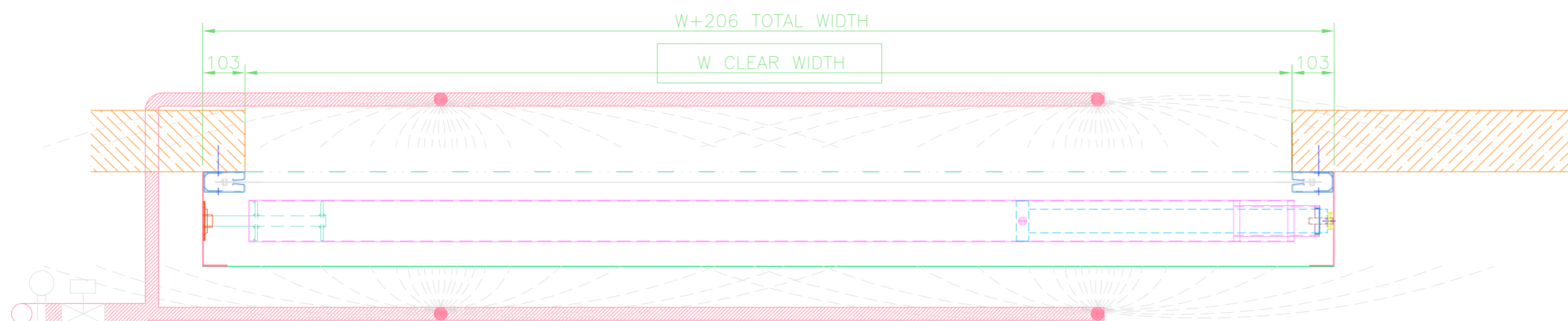
NOTES

1. IT IS THE CLIENTS RESPONSIBILITY TO ENSURE THAT THE STRUCTURE IS CAPABLE OF ACCEPTING THE FIXINGS SHOWN AND SUPPORTING THE DOOR WEIGHT WHILST AT REST AND DURING OPERATION.
- APPROX. DOOR WEIGHT = kg
2. AVAPS s.r.o. RECOMMEND THAT FULL ACCESS TO THE SHUTTER BOX BE PROVIDED ACROSS THE OPENING, FOR MAINTENANCE/REPLACEMENT PURPOSES. IF FULL ACCESS IS NOT PROVIDED, AVAPS s.r.o. WILL NOT ACCEPT ANY CHARGES ASSOCIATED WITH THE GAINING OF ACCESS, TO FACILITATE THE MAINTENANCE OR REPLACEMENT OF ANY SHUTTER COMPONENTS.
3. **ALL EXPOSED SUPPORTING STEELWORK MUST BE SUITABLY FIRE PROTECTED BY OTHERS, AFTER THE INSTALLATION OF THE SHUTTER. THE CLIENT MUST ALSO ENSURE THE BACK FILLING OF ANY GAPS BETWEEN THE DOOR AND THE OPENING STRUCTURE, DUE TO UNEVEN OR OUT OF SQUARE OPENINGS. MATERIAL EQUAL TO THE FIRE RESISTANCE OF THE DOOR MUST BE USED. FAILURE TO COMPLETE THIS WORK MAY INVALIDATE THE FIRE INTEGRITY.**
4. **ELECTRICAL OPERATION:** CLIENT TO PROVIDE, PRIOR TO SHUTTER DELIVERY: A 230V, SINGLE PHASE SUPPLY TERMINATING AT 16 AMP.
5. **SELF CLOSING:** ACTIVATED BY MEANS OF: FIRE SIGNAL OPERATION IS VIA A 0V DC NC. (ALL INTER-CABLING AND CONNECTIONS BY OTHERS).
6. **FINISH:** CURTAIN SILVER / GREY. ALL METALWORK TO BE GALVANISED, OR POLYESTER POWDER COATED TO BS/RAL STANDARD (30% GLOSS).
7. UPON LOSS OF MAINS POWER THE DOOR WILL CLOSE.
8. IN THE EVENT OF A FIRE ALARM; LOCAL ENVIRONMENTAL CONDITIONS MUST NOT CREATE PRESSURE DIFFERENTIALS ACROSS THE OPENING, FOR EXAMPLE, ANY EXTERNAL DOOR OR ANY SMOKE/EXTRACTION SYSTEM THAT CAN CREATE SUCH A CHANGE MUST BE DEACTIVATED; WHILST THE FIRE CURTAIN IS IN MOTION.



ELEVATION VIEWED FROM INSIDE OF OPENING

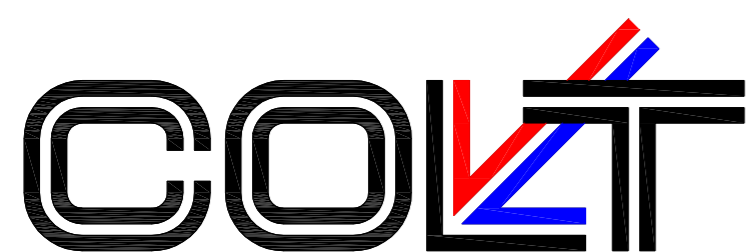
TYPICAL SECTION THROUGH OPENING



PLAN VIEW

DOOR REF NO...../1

- 1 INFLOW PIPE AND SPHERICAL VALVE – CLIENT TO PROVIDE, PRIOR TO SHUTTER DELIVERY
- 2 MANOMETER
- 3 REMOTE ACTUATED VALVE, OPERATED BY FIRE ALARM
- 4 NOZZLES
TYPE AND QUANTITY OF NOZZLES FROM CALCULATION
ALL SHUTTER AREA MUST BE UNDER WATER SPRAYING



TITLE	ARRANGEMENT OF FIBREROLL ROLLING FIRE CURTAIN (EW 120)				C	B	A	F	DRAWN:	JK	WORKS ORDER NUMBER
	SITE	XXXXXXXXXXXXXXXXXXXXXXXXXXXXXXXXXXXX							E		
DATE		REVISION	CHK'D	REF	DATE	REVISION	CHK'D	REF	SCALE:	-	DRAWING NUMBER